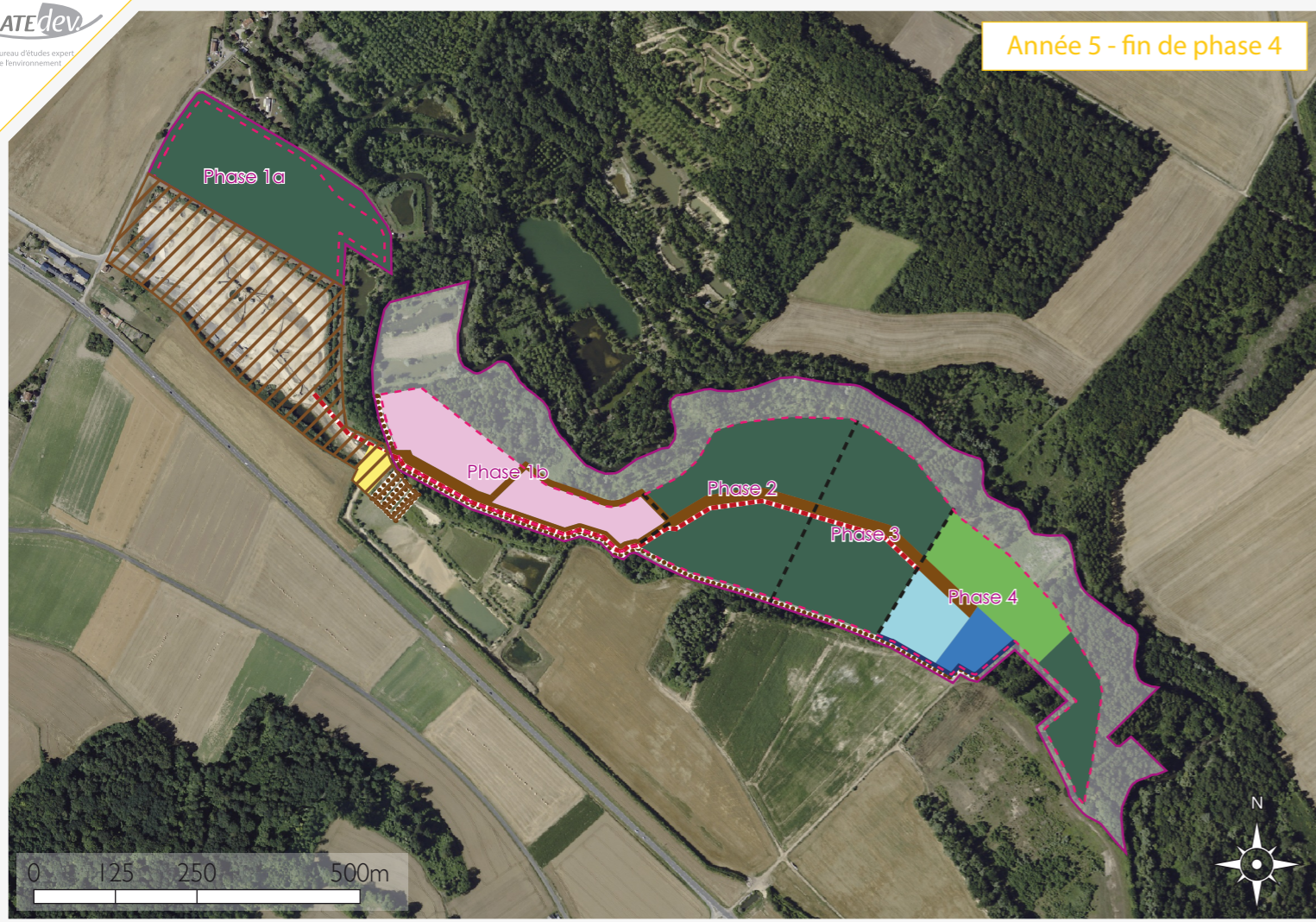
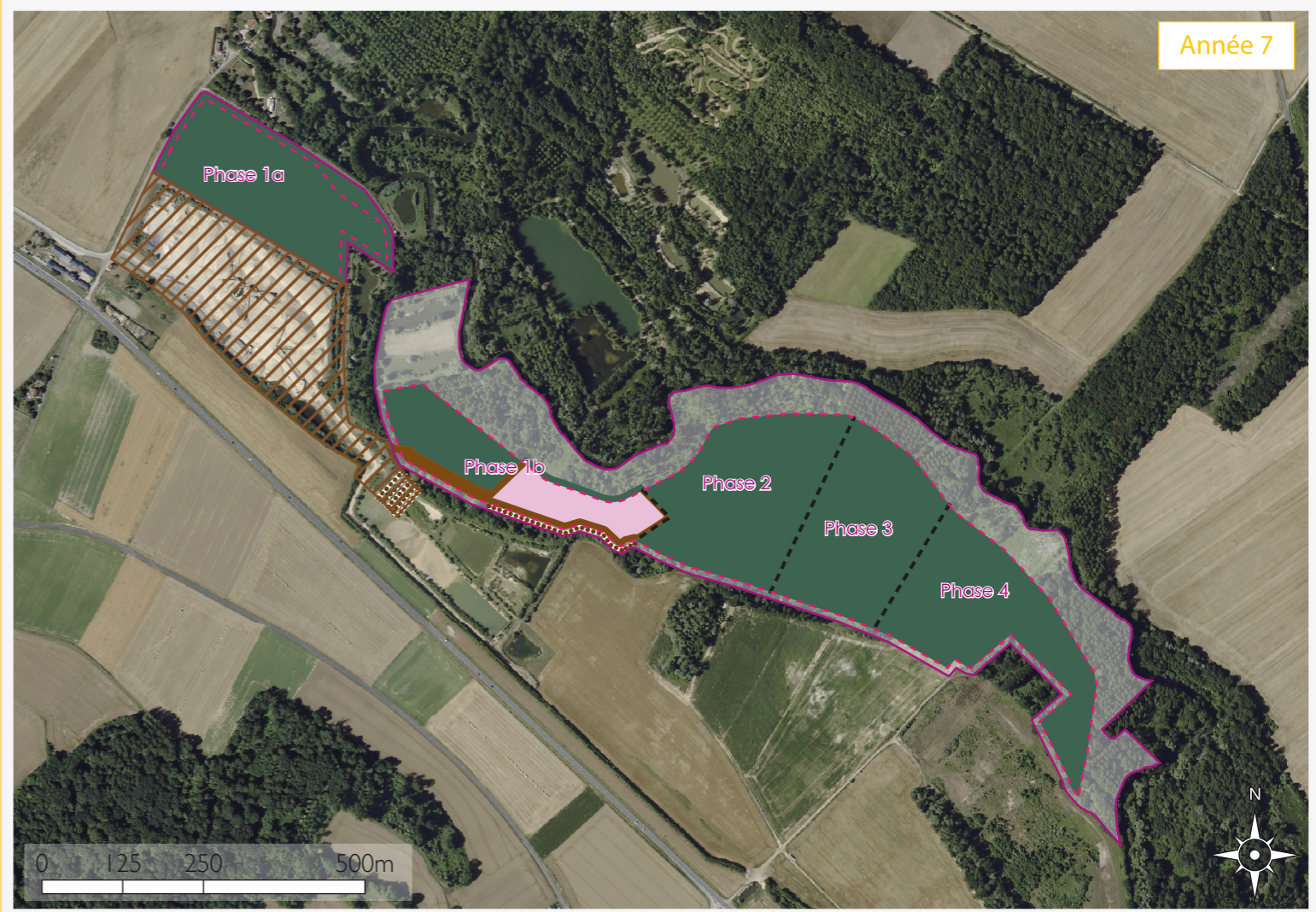


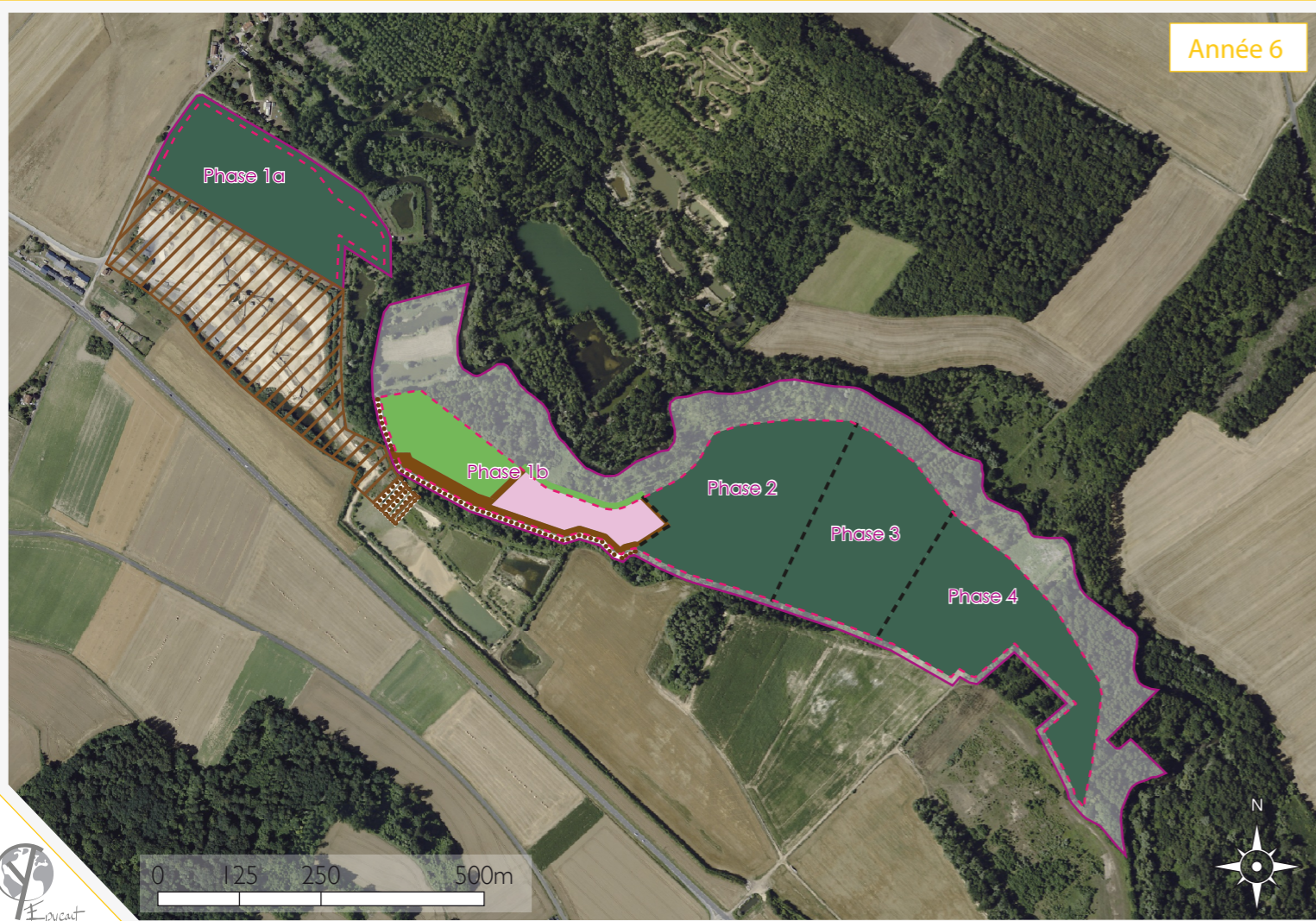
Année 5 - fin de phase 4



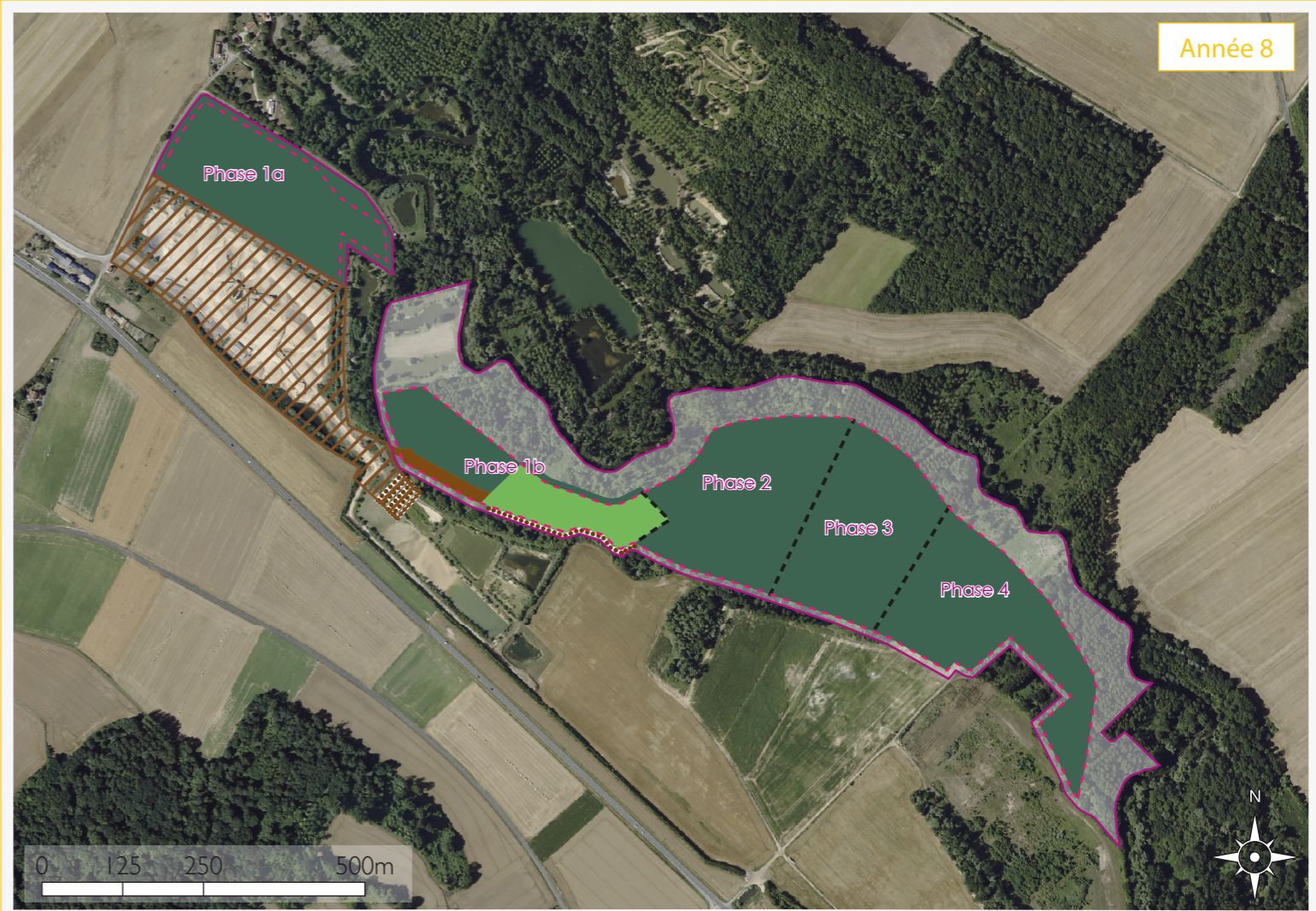
Année 7


















Année 6



Année 8



Garanties financières

	Projet de carrière (autorisation)		Installation de traitement (renouvellement) et station de transit (déclaration)
	Surface exploitée		
	Bassin de décantation		Zone défrichée non exploitée
	Piste		Zone en cours de remise en état
	Stock de stérile		Zone remise en état
	Zone en cours d'exploitation		Berge à remettre en état
	Zone en eau		Convoyeur
	Zone en cours de décapage		Merlon

Source : IGN Ortho

DEMANDE

élaborée avec la participation de :



43, boulevard du maréchal Joffre

92340 Bourg-la-Reine

Téléphone : 01 46 60 26 77

Télécopie : 01 46 60 45 96

Courriel : philippe.boucher@atedev.fr

Site : www.atedev.fr

Septembre 2016



GSM HEIDELBERGCEMENT Group

Région Grand Bassin Parisien
Les Technodes
BP 02
78931 GUERVILLE Cedex

Téléphone : 01 34 77 76 00
Télécopie : 01 34 77 76 24
Courriel : cfalampin@gsm-granulats.fr